



Flat 2 2 Raymond Road, Maidenhead, SL6 6DF
£165,000 Leasehold

CHAIN FREE. An excellent opportunity to buy a first floor one bedroom flat situated in a cul de sac in the popular College area within walking distance of the town centre and Elizabeth line station. The property needs updating throughout but has the advantage of a parking space and renewed lease.

Ground Floor Lobby

Private entrance lobby with stairs to the first floor landing.

First Floor Landing/Study

Double aspect, space for desk

Sitting room

Access to kitchen

Bathroom

Panelled bath with mixer hand shower attachment, close coupled WC, tiled surround to units, extractor fan

Kitchen

Floor and wall cupboards and drawers, electric oven and hob with extractor fan over, tiled splashbacks, work surfaces incorporating inset stainless steel sink, space for washing machine

Double Bedroom

Door leading to kitchen

Outside

Parking space for one car

Floor Plan

Approximate Floor Area = 53.7 sq m / 578 sq ft

Raymond Road

Waterman
Established 1990

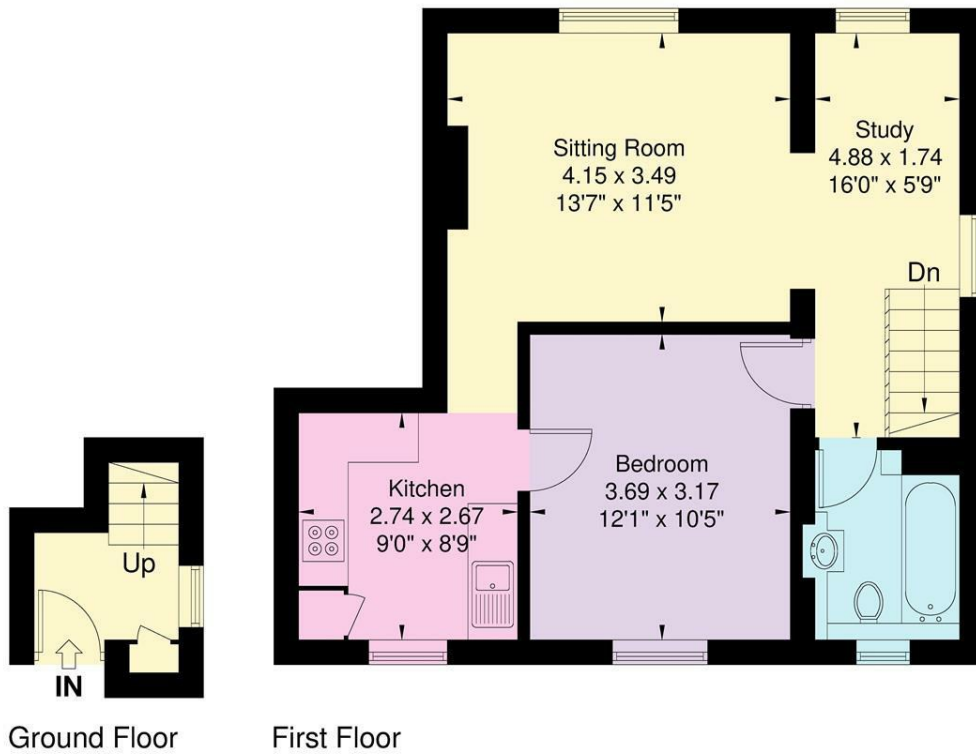
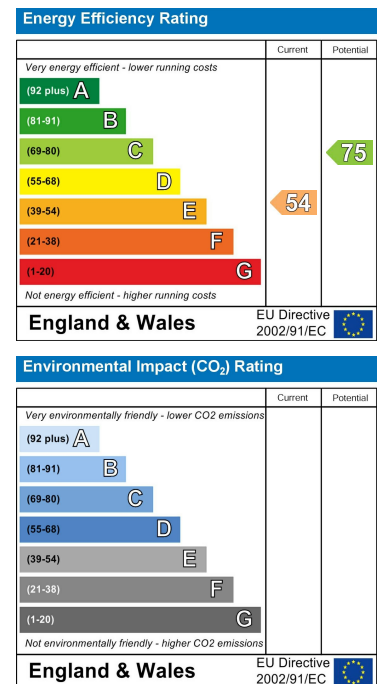


Illustration for identification purposes only, measurements are approximate, not to scale.

Area Map



Energy Efficiency Graph



These particulars, whilst believed to be accurate are set out as a general outline only for guidance and do not constitute any part of an offer or contract. Intending purchasers should not rely on them as statements of representation of fact, but must satisfy themselves by inspection or otherwise as to their accuracy. No person in this firm's employment has the authority to make or give any representation or warranty in respect of the property.